

Mitchell



VOL.51 NO.11

November 2014

EMC

The news
you need to
know in
5 minutes!

CAMILLA, GEORGIA
www.mitchellemc.com

POWER of the **Pink**



Mitchell EMC linemen wore pink hard hats to show their support for Breast Cancer Awareness Month during October. The pink hard hats were part of a month-long "Pink Power" effort to raise awareness for the American Cancer Society. Also, office personnel showed their support by wearing "Pink Power" T-Shirts throughout the month.

Breast Cancer is the most commonly diagnosed cancer in women, after skin cancer. In fact, one in eight women in the United States will be diagnosed with breast cancer in their lifetime.

While focusing on member needs, Mitchell EMC is committed to supporting Breast Cancer Awareness in our communities. Charles Gilbert, Mitchell EMC Safety & Loss Control Coordinator, purchased the pink hard hats from Global Industrial, who donates a portion of the sales to Breast Cancer Research.



A Community Partner Since 1937

Georgia Agricultural Tax Exemption Expires Dec. 31

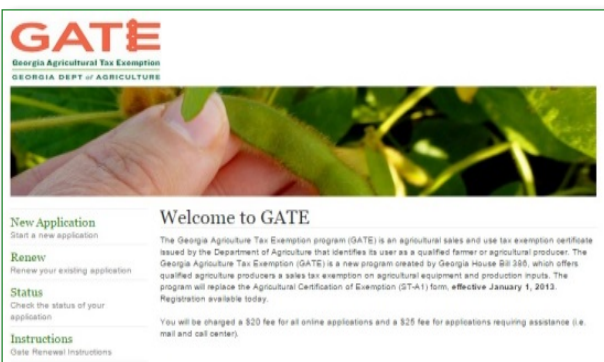
If you're an agricultural producer and receive the Georgia Agricultural Tax Exemption (GATE) on electricity, you must renew it beginning this October.

GATE is an agricultural sales and use tax exemption certificate issued by the Georgia Department of Agriculture. The document identifies its user as a qualified farmer or producer who is exempt from sales tax on the inputs used in the production of their commodity.

Mitchell EMC member-owners who receive a GATE certificate should send us a copy along with the account numbers that apply to the GATE certificate, so we can apply the exemption to their account. **We must receive a copy of the new certificate by December 31 for the exemption to continue.**

Producers who have never received GATE can also apply and send a certificate copy to Mitchell EMC. Visit <https://forms.agr.georgia.gov/gate/> or call 855-FARM TAX for more information, to renew or apply.

Mail GATE certificate copies to Mitchell EMC, Attn: Beth Williamson P.O. Box 409, Camilla, GA, 31730.



GATE
Georgia Agricultural Tax Exemption
GEORGIA DEPT. OF AGRICULTURE

Welcome to GATE

The Georgia Agriculture Tax Exemption program (GATE) is an agricultural sales and use tax exemption certificate issued by the Department of Agriculture that identifies its user as a qualified farmer or agricultural producer. The Georgia Agriculture Tax Exemption (GATE) is a new program created by Georgia House Bill 366, which offers qualified agriculture producers a sales tax exemption on agricultural equipment and production inputs. The program will replace the Agricultural Certification of Exemption (GT-A1) form, effective January 1, 2013. Registration available today.


You will be charged a \$20 fee for all online applications and a \$25 fee for applications requiring assistance (i.e. mail and call center).

New Application
Start a new application

Renew
Renew your existing application

Status
Check the status of your application

Instructions
Gate Renewal Instructions



JOIN US IN A COVER-UP!
Mitchell EMC will be collecting winter coats, good used and new, for the needy. If you can contribute, please bring your coats to any MEMC office or contact any MEMC employee. The coats will be distributed the first of December.



SANTA PHOTOS
ALL AGES

THURSDAY, DECEMBER 4TH
TUESDAY, DECEMBER 9TH
5:00 TO 8:00 P.M.

In the auditorium
Located behind Mitchell EMC
475 Cairo Road
Camilla, GA 31730

All Proceeds will benefit the American Cancer Society,
Relay for Life 2015.

Happy Thanksgiving

Mitchell EMC offices will be closed Thursday and Friday, November 27th and 28th, for Thanksgiving holidays.



Draft Dodgers: Weather Stripping Your Home

By Amber Bentley

There is no doubt about it; the cold weather is on its way. Not only is it important to make sure that your heating unit is working properly, but you should check your home to make sure that none of that heat is escaping.

When the weather turns colder, drafts around windows and doors are constantly letting in cool air. Most people will immediately want to raise their thermostat even higher; however, that will cause you to use more energy when you don't necessarily need to. The best solution is to weather strip your home. This is typically an easy fix that will eliminate energy waste and help you save on your monthly electric bill.

Sometimes drafts are obvious, and other times the openings are much smaller. Here are two quick ways to find out if heat is escaping from your home. For doors, look for daylight between the door and its frame, if you see even a hint of light in between the two, you need to weather strip that area. For windows, place a piece of paper between the sash and the seal then close it. If you can remove the piece of paper from the window without ripping it, you need to weather strip that area as well.

The great thing about all of this is that weather stripping is easy! There is an assortment of materials available to you (like rubber, foam, metal, etc.) and they are all inexpensive. Once you have purchased what you need, keep the following in mind before you begin weather stripping: be sure the surface is dry and clean, measure the area more than once for best accuracy, and apply so that strips compress both sides of the window or door.

To weather strip windows:

- Place the stripping between the frame and the sash.
- Be sure that it compresses the window when shut.
- Check to make sure that the stripping does not interfere with the moving of the window.

To weather strip doors:

- Choose the proper sweeps and thresholds for your door.
- Weather-strip the entire door jamb.
- Make sure the stripping meets tightly at both corners.
- Use a thickness that allows for a tight press between the door and the ground, but one that does not make the door difficult to shut.

Roughly half of the energy that your home uses comes from heating and cooling. So the next time you feel an uncomfortable draft in your home, do not immediately crank up the heat. Check to find out where the draft is coming from and properly weather strip the area. This will ultimately save you more energy and more money in the end.

Amber Bentley writes on energy efficiency issues for the National Rural Electric Cooperative Association, the Arlington, Va.-based service arm of the nation's 900-plus consumer-owned, not-for-profit electric cooperatives.

WHAT WILL I NEED TO WEATHER STRIP DOORS AND WINDOWS?

There are a variety of materials available to weather strip your home. Here are a few options to help you choose:

*Apply weather stripping around the door frame and stop. At the bottom of a door, install a door sweep, door shoe or threshold; or apply reinforced-foam weather stripping. Apply weather stripping at the top and bottom of window sash.

FELT

Reinforced with a flexible metal strip. Should be stapled, glued or tacked into place.

Cost: Low

Advantages: Easy to install and inexpensive.

Disadvantages: Low durability. Do not use where exposed to a great deal of moisture. All-wool felt is more durable but very visible.

ROLLED OR REINFORCED VINYL

Pliable or rigid strip gasket (attached to wood or metal strips).

Cost: Low to moderate.

Advantages: Easy installation, various colors to help with visibility and some types of rigid strip gaskets provide slot holes for height adjustment.

Disadvantages: Very visible.

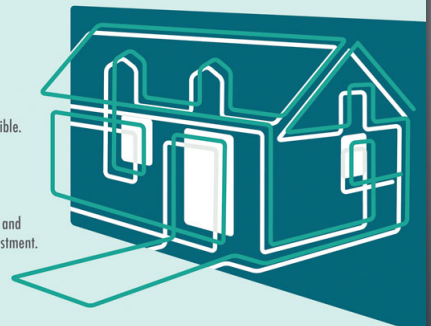
REINFORCED FOAM

Closed-cell foam attached to wood or metal strips.

Cost: Moderately low

Advantages: Effective sealer, rigid, proven to work well.

Disadvantages: Can be difficult to install and very visible.



Source: Department of Energy

*For more weather stripping options, visit <http://energy.gov/energysaver/articles/weatherstripping>

Energy Efficiency Tip of the Month



Be merry and bright, but don't let your holiday lights shine all night. Save money on your electric bill by installing a light timer for your decked out home. It can help lower your electric bill and reduce energy consumption. Use a manual timer plugged into an electrical outlet to automatically turn lights on and off as scheduled.

Source: U.S. Department of Energy



Employee SPOTLIGHT



Dixie McDaniel is Mitchell EMCs November Employee Spotlight. Dixie is the CSR Supervisor in the Sylvester District Office. She has been employed with Mitchell EMC for over 27 years.

“The atmosphere at Mitchell EMC is like a second family,” said Dixie. “Your fellow employees care for you and treat you like family.”

“A memorable event for me was the tornado of 2000. It was a very devastating time in Camilla, and everyone knew someone that was affected by the storm. MEMC employees worked around the clock trying to restore power back to homes as soon as possible,” said Dixie

Dixie enjoys spending time with her 8 year old grandson Harrison, and her new puppy Sir Barkley. Dixie and her fiancée also enjoy a good tennis match when the weather permits, as well as long walks.

Statement of Equal Employment Opportunity

All applicants for employment shall be considered and hired on the basis of merit, without regard to race, color, religion, sex (including pregnancy), age, national origin, disability, genetic information, or past or present military status. The employment practices shall ensure equal treatment of all employees, without discrimination as to promotion, discharge, rates of pay, fringe benefits, job training, classification, referral, and other aspects of employment, on the basis of race, color, religion, sex (including pregnancy), national origin, disability, age, genetic information, or past or present military status. M/F/V/DV/D

WATT'S COOKING



Turtle Pumpkin Pie

- ¼ cup plus 2 tablespoons caramel ice cream topping (divided)
- 1 honey maid graham pie crust
- ½ cup plus 2 tablespoons chopped pecans (divided)
- 1 cup cold milk
- 2 packages (3.4 ounces each) vanilla instant pudding
- 1 cup canned pumpkin
- 1 teaspoon ground cinnamon
- 1 teaspoon ground nutmeg
- 1 tub (8 ounces) whip topping (divided)



Pour ¼ cup caramel topping into crust, sprinkle with ½ cup nuts.

Beat pudding mixes, milk, pumpkin and spices with whisk until blended. Stir in 1 ½ cups whip topping. Spoon mixture into crust.

Refrigerate one hour. Top with remaining whip topping, caramel topping, and nuts just before serving.

Thanks!

to **Mary Anderson**,
Albany, GA, for sharing this
recipe.

Share & Win!

Send us your favorite quick and easy dinner recipes. If your recipe is chosen for print, you can win a **\$25 credit** on your next Mitchell EMC bill.

Send recipes to Heather Greene, P.O. Box 409, Camilla, GA 31730 or email to heather.greene@mitchellemc.com.